



NAUTIQUE.COM SURFING • RIDING • SKIING

2024



# EMBARK ON YOUR NAUTIQUE ADVENTURE

---

At Nautique, every new model year brings a sense of honor and excitement as we continue to build on our tradition of excellence. Each year, our vibrant community of owners, enthusiasts, and dedicated employees propels our brand forward with unmatched passion. Crafting products that bring joy on the water is not just our responsibility—it's a source of immense satisfaction for our entire team. We also recognize the increasing number of families who choose to share their lives with us, making Nautique a cherished part of their stories. Whether it's bonding with loved ones, creating lasting memories with your kids, or gathering friends for a day on the water, we are all united in living our dreams behind a Nautique.

Capturing the essence of that passion is what fuels our efforts. Our mission is to exceed your expectations and enhance your summertime fun. This commitment is at the heart of everything we do, and the past year has been a testament to our unwavering dedication. Refreshing our best-selling products, introducing groundbreaking innovations, and relentlessly elevating our standards of quality and customer service define each new Nautique we deliver.

As we look to the horizon of the Nautique line-up, there's an undying enthusiasm. From the redesign of the all-new Paragon models to the debut of the reimagined GS24, we offer the perfect boat for everyone. As you explore the perfect Nautique model for your needs, rest assured that each one of our world-class products delivers endless fun and lifelong memories.

With a rich history and a dedication to excellence, Nautique stands as a beacon for passion and innovation ready to enrich the lives of those who spend time on the water. We invite you to discover our 2024 Nautique products and embark on your journey of extraordinary adventures.



Greg Meloon - President  
Nautique Boat Company

*"Commit to the Lord whatever you do,  
and he will establish your plans."*  
- Proverbs 16:3































# YOUR NAUTIQUE, OUR COMMITMENT

---

## 5-YEAR, 1k-HOUR WARRANTY

You get peace of mind when purchasing a new Nautique thanks to our 5-Year Transferable Warranty\*. Over the course of our 99-year history, we have built a reputation of creating trust and loyalty with our customers by always having their back. We want you to have the best ownership experience possible, that's why we go to great lengths to make certain you are enjoying your Nautique exactly the way it was designed.

\*Nautique warrants to the original owner or user, that each new 2024 Nautique boat, as originally manufactured by Nautique, shall under normal authorized use be free of defect in material and workmanship for a period of five (5) years or 1,000 hours from the date of delivery (whichever comes first). This warranty applies to factory-installed components including boat parts, options or other components not manufactured by Nautique Boat Company and is transferable one-time only to the second owner.









# PART OF A WINNING TEAM

---

## OWNERSHIP WITH ACCOLADES

Come be a part of Nautique's award-winning tradition and experience the feeling of ownership with honors. Each year, we are celebrated across the marine industry with accolades that continue to keep our customers happy. From being honored with awards in customer satisfaction and product innovation, we're leading the way in all aspects of our industry.







**Excellence in Customer  
Satisfaction**

Inboard Watersports Boats

**NAUTIQUE BOAT  
COMPANY, INC.**



# FLIGHT CONTROL TOWERS®

---

## STYLE AND FUNCTION

Each model in our G-Series, S-Series and GS-Series comes standard with our Flight Control Tower® that provides the perfect tow point for wakeboarding or wakesurfing and manually folds down. There's also an Actuated Flight Control Tower version for these models, which folds up or down at the touch of a button. We are also proud to offer the Telescoping Flight Control Tower that is standard on our Paragons and optional on the G-Series and S-Series. This tower allows you to easily telescope the tower up or down with the bimini remaining in place, and everyone sitting comfortably in their seats.







**FLIGHT CONTROL TOWER  
MANUAL**

*Available on:*  
GS22 | GS20 | GS24



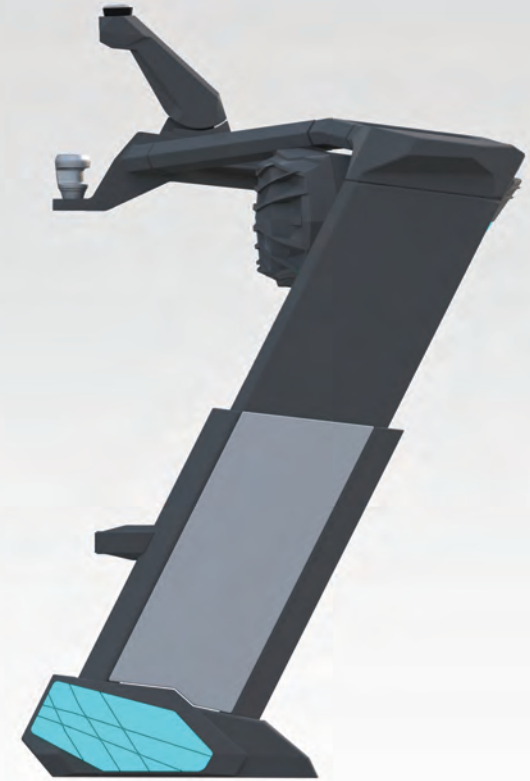
**FLIGHT CONTROL TOWER  
ACTUATED**

*Available on:*  
GS22 | GS20 | GS24



**FLIGHT CONTROL TOWER  
MANUAL OR ACTUATED**

*Available on:*  
G25 | G23 | G21  
S25 | S23 | S21



**FLIGHT CONTROL TOWER  
TELESCOPING**

*Available on:*  
G25 | G23 | G21  
S25 | S23 | S21



# EXPERIENCE OUR ENDLESS WAVES

---

## NAUTIQUE SURF SYSTEM®

Found aboard all of our Super Air Nautique models, the Nautique Surf System (NSS) is our legendary technology that allows your boat to shape up long, perfectly formed surf waves for everyone to enjoy. Grab your friends and family and get ready to surf endless waves all summer long. With this groundbreaking innovation that allows our waves to be completely customizable, the NSS is ready to deliver the fun for surfers of all ages and skill-levels.









# BUILT WITH THE FINEST MATERIALS

---

## THE SUM OF HIGH-QUALITY PARTS

When sourcing the components that go into each Nautique, our team takes pride in the search. We locate and incorporate only the most durable, high-quality and luxurious materials available so that your Nautique will withstand the elements and provide years of satisfaction. You'll notice it when you step aboard a Nautique; the attention to detail that our team has given to every square inch can only be achieved in a handmade product, with every surface providing a refined feel. That's why each model that rolls off our factory floor in Orlando, Florida includes our dedication to quality so your family can enjoy it well into the future.









# SUPER AIR NAUTIQUE SERIES

G25P | G23P | G25 | G23 | G21 | S25 | S23 | S21 | GS24 | GS22 | GS20

---

## LEGENDARY LINEAGE

The Super Air Nautique badge is synonymous with excellence. With a storied past of groundbreaking innovation and industry-firsts, the Super Air Nautique is engrained in the history of wake sports. With each model providing world-class wakes and surf waves along with a higher level of quality and luxury, there is nothing quite like a Super Air Nautique. There's something to offer everyone in the 2024 Super Air Nautique lineup, so whichever watersports activity your family like to focus on, we have a model for you.









## G25P



**LENGTH**  
25' 3" (7.70 m)

**DRAFT**  
34.5" (0.88 m)

**DRY WEIGHT**  
8,400 lbs (3,810 kg)

**HORSEPOWER**  
630 / 370

**MAX CAPACITY**  
19 People / 2,800 lbs (1,270 kg)

**BEAM**  
102" (2.59 m)

**FUEL CAPACITY**  
88 gal (333.1 l)

**MAX FACTORY BALLAST**  
3,400 lbs (1,542 kg)

## G23P



**LENGTH**  
23' 3" (7.09 m)

**DRAFT**  
34" (0.86 m)

**DRY WEIGHT**  
7,750 lbs (3,515 kg)

**HORSEPOWER**  
630 / 370

**MAX CAPACITY**  
16 People / 2,500 lbs (1,134 kg)

**BEAM**  
102" (2.59 m)

**FUEL CAPACITY**  
65.6 gal (248.2 l)

**MAX FACTORY BALLAST**  
3,700 lbs (1,678 kg)

## G25



**LENGTH**  
25' (7.62 m)

**DRAFT**  
31" (0.79 m)

**DRY WEIGHT**  
6,400 lbs (2,903 kg)

**HORSEPOWER**  
450 / 630 / 370

**MAX CAPACITY**  
19 People / 2,800 lbs (1,270 kg)

**BEAM**  
102" (2.59 m)

**FUEL CAPACITY**  
88 gal (333.1 l)

**MAX FACTORY BALLAST**  
3,650 lbs (1,656 kg)

## G23



**LENGTH**  
23' (7.01 m)

**DRAFT**  
31" (0.79 m)

**DRY WEIGHT**  
6,000 lbs (2,722 kg)

**HORSEPOWER**  
450 / 630 / 370

**MAX CAPACITY**  
16 People / 2,500 lbs (1,134 kg)

**BEAM**  
102" (2.59 m)

**FUEL CAPACITY**  
65.6 gal (248.2 l)

**MAX FACTORY BALLAST**  
3,650 lbs (1,656 kg)

## G21



**LENGTH**  
21' 6" (6.55 m)

**DRAFT**  
31.25" (0.79 m)

**DRY WEIGHT**  
5,800 lbs (2,631 kg)

**HORSEPOWER**  
450 / 630 / 370

**MAX CAPACITY**  
14 People / 2,200 lbs (998 kg)

**BEAM**  
102" (2.59 m)

**FUEL CAPACITY**  
46.5 gal (176 l)

**MAX FACTORY BALLAST**  
2,250 lbs (1,021 kg)



## S25



**LENGTH**  
25' (7.62 m)

**DRAFT**  
32" (0.81 m)

**DRY WEIGHT**  
5,800 lbs (2,631 kg)

**HORSEPOWER**  
450 / 570 / 370

**MAX CAPACITY**  
18 People / 2,700 lbs (1,225 kg)

**BEAM**  
100" (2.54 m)

**FUEL CAPACITY**  
85.8 gal (324.8 l)

**MAX FACTORY BALLAST**  
3,300 lbs (1,497 kg)

## S23



**LENGTH**  
23' (7.01 m)

**DRAFT**  
31.25" (0.79 m)

**DRY WEIGHT**  
5,500 lbs (2,540 kg)

**HORSEPOWER**  
355 / 450 / 570 / 370

**MAX CAPACITY**  
16 People / 2,300 lbs (1,043 kg)

**BEAM**  
100" (2.54 m)

**FUEL CAPACITY**  
65.1 gal (246.4 l)

**MAX FACTORY BALLAST**  
3,150 lbs (1,429 kg)

## S21



**LENGTH**  
21' 5" (6.52 m)

**DRAFT**  
32" (0.81 m)

**DRY WEIGHT**  
5,200 lbs (2,359 kg)

**HORSEPOWER**  
355 / 400 / 450 / 570 / 370

**MAX CAPACITY**  
14 People / 2,100 lbs (953 kg)

**BEAM**  
100" (2.54 m)

**FUEL CAPACITY**  
65.1 gal (246.4 l)

**MAX FACTORY BALLAST**  
2,650 lbs (1,202 kg)

## GS24



**LENGTH**  
24' (7.32 m)

**DRAFT**  
30" (0.76 m)

**DRY WEIGHT**  
5,250 lbs (2,381 kg)

**HORSEPOWER**  
355 / 450 / 570

**MAX CAPACITY**  
17 People / 2,650 lbs (1,202 kg)

**BEAM**  
100" (2.54 m)

**FUEL CAPACITY**  
76.7 gal (290.3 l)

**MAX FACTORY BALLAST**  
3,450 lbs (1,565 kg)

## GS22



**LENGTH**  
22' (6.70 m)

**DRAFT**  
32" (0.81 m)

**DRY WEIGHT**  
4,900 lbs (2,223 kg)

**HORSEPOWER**  
355 / 400 / 450 / 570

**MAX CAPACITY**  
15 People / 2,200 lbs (998 kg)

**BEAM**  
100" (2.54 m)

**FUEL CAPACITY**  
59 gal (223.3 l)

**MAX FACTORY BALLAST**  
2,900 lbs (1,315 kg)



**LUXURY WITHOUT LIMITS**





# G25 PARAGON

## SUPER AIR NAUTIQUE



Born out of relentless innovation, the all-new Super Air Nautique G25 Paragon showcases the next level of flawless design and attention to detail like no other boat on the market. Our award-winning team of designers and engineers pored over every inch of this 25-foot model to make certain it is the most impressive wake sports boat in its class. The G25 Paragon has been completely redesigned to create an even more enjoyable boating experience for you and your entire crew. With meticulous design choices and cutting-edge technology to make your days on the water more enjoyable, the all-new G25 Paragon provides luxury without limits. From industry-leading quality to modern, luxurious styling, this next-generation G25 Paragon delivers on everything you expect from a Nautique.

### BOAT SPECS

**LENGTH**  
25' 3" (7.70 m)

**DRAFT**  
34.5" (0.88 m)

**DRY WEIGHT**  
8,400 lbs (3,810 kg)

**HORSEPOWER**  
630 / 370

**MAX CAPACITY**  
19 People / 2,800 lbs (1,270 kg)

**BEAM**  
102" (2.59 m)

**FUEL CAPACITY**  
88 gal (333.1 l)

**MAX FACTORY BALLAST**  
3,400 lbs (1,542 kg)

\*Dry weight represents a boat with standard factory equipment installed, minus fuel.













**PASSION FOR PERFECTION**





# G23 PARAGON

## SUPER AIR NAUTIQUE



The all-new Super Air Nautique G23 Paragon is the best-in-class leader and continues its reign of delivering exquisite design and unrivaled detail. As the most celebrated wake sports boat on the market, this next-generation Paragon combines a passion for perfection with performance at the highest-scale. The G23 Paragon has been meticulously redesigned and finely tuned to create an even more compelling experience both inside the boat, as well as behind it. Whether you're looking for the perfect wakes or waves, the G23 Paragon will exceed all your expectations. The balance of form and function, modern styling, elegant lines, as well as unique and thoughtful features can be found throughout the boat. Nautique has once again redefined what you've come to know and expect with the all-new G23 Paragon. This next iteration provides you with everything you've wanted in a luxury wake sports boat, as well as what you've come to anticipate from Nautique.

### BOAT SPECS

**LENGTH**  
23' 3" (7.09 m)

**DRAFT**  
34" (0.86 m)

**DRY WEIGHT**  
7,750 lbs (3,515 kg)

**HORSEPOWER**  
630 / 370

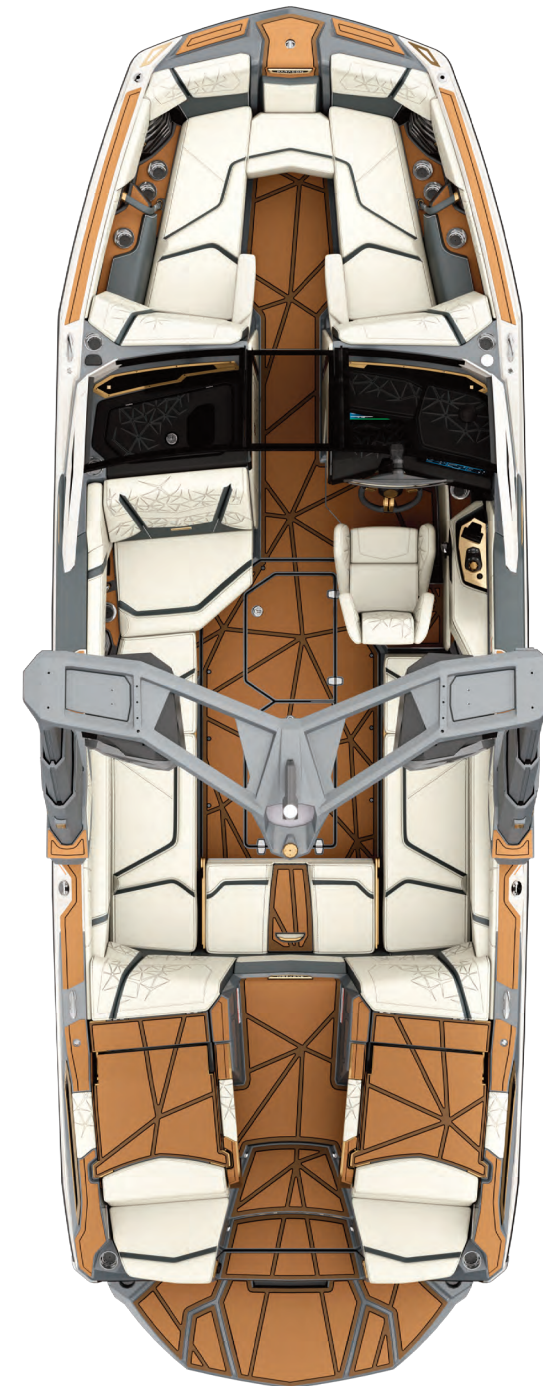
**MAX CAPACITY**  
16 People / 2,500 lbs (1,134 kg)

**BEAM**  
102" (2.59 m)

**FUEL CAPACITY**  
65.6 gal (248.2 l)

**MAX FACTORY BALLAST**  
3,700 lbs (1,678 kg)

\*Dry weight represents a boat with standard factory equipment installed, minus fuel.













**ELEVATE YOUR EXPERIENCE**





# G25

## SUPER AIR NAUTIQUE



Get ready for an unmatched experience in the 2024 Super Air Nautique G25. Equipped to handle even the most expansive crews, the 25-foot model is the largest offering in the G-Series and can accommodate up to 19 people. Comfortably enjoy the day with family and friends as the G25 serves up perfectly shaped wakesurf waves and wakeboard wakes suitable for all ages and abilities. Boasting the world-class quality and amenities of a Nautique, the G25 is the ultimate wake sports boat to make lifelong memories with you and your crew.

### BOAT SPECS

**LENGTH**  
25' (7.62 m)

**DRAFT**  
31" (0.79 m)

**DRY WEIGHT**  
6,400 lbs (2,903 kg)

**HORSEPOWER**  
450 / 630 / 370

**MAX CAPACITY**  
19 People / 2,800 lbs (1,270 kg)

**BEAM**  
102" (2.59 m)

**FUEL CAPACITY**  
88 gal (333.1 l)

**MAX FACTORY BALLAST**  
3,650 lbs (1,656 kg)

\*Dry weight represents a boat with standard factory equipment installed, minus fuel.



SUPER AIR NAUTIQUE G25











**UNPARALLELED PERFORMANCE**





# G23

## SUPER AIR NAUTIQUE



As the world's leading wake sports boat for over a decade, the Super Air Nautique G23 remains the best-performing and highest-ranking boat in its class. The legend of the G23 continues, providing performance characteristics that are suitable for every wakeboarder and wakesurfer from beginner all the way to the most seasoned pros. With a reputation as the undisputed leader in performance and quality, the G23 backs that legendary status up with unmatched wakes and waves and the refined details only found aboard a Nautique.

### BOAT SPECS

**LENGTH**  
23' (7.01 m)

**DRAFT**  
31" (0.79 m)

**DRY WEIGHT**  
6,000 lbs (2,722 kg)

**HORSEPOWER**  
450 / 630 / 370

**MAX CAPACITY**  
16 People / 2,500 lbs (1,134 kg)

**BEAM**  
102" (2.59 m)

**FUEL CAPACITY**  
65.6 gal (248.2 l)

**MAX FACTORY BALLAST**  
3,650 lbs (1,656 kg)

\*Dry weight represents a boat with standard factory equipment installed, minus fuel.



SUPER AIR NAUTIQUE G23











# LEGENDARY LINEAGE





# G21

## SUPER AIR NAUTIQUE



Get ready to embrace the legendary wakes and waves of the 2024 Super Air Nautique G21. A boat that incorporates the award-winning lineage and performance of the renowned G-Series, the G21 is the highest-performing wake boat in its class. Take one step inside and discover a spacious and configurable interior layout and an ergonomically designed helm area, with quality and thoughtful design at every turn. From world-class performance to family fun, the G21 emerges as the quintessential wake sports boat and your gateway to an endless summer.

### BOAT SPECS

**LENGTH**  
21' 6" (6.55 m)

**DRAFT**  
31.25" (0.79 m)

**DRY WEIGHT**  
5,800 lbs (2,631 kg)

**HORSEPOWER**  
450 / 630 / 370

**MAX CAPACITY**  
14 People / 2,200 lbs (998 kg)

**BEAM**  
102" (2.59 m)

**FUEL CAPACITY**  
46.5 gal (176 l)

**MAX FACTORY BALLAST**  
2,250 lbs (1,021 kg)

\*Dry weight represents a boat with standard factory equipment installed, minus fuel.



SUPER AIR NAUTIQUE G21











**PUSHING THE BOUNDARIES**





# S25

## SUPER AIR NAUTIQUE



Designed to accommodate larger crews, the 2024 Super Air Nautique S25 boasts luxury, performance, and style in a 25-foot package. Pushing the boundaries of wake and wave experiences, the S25 delivers beyond expectations for your friends and family. With an extensive selection of standard and optional features and customized performance, this model can accommodate any age or skill level. Establishing itself as a wake boat on a grand-scale, the S25 is tailored to those who seek the blend of a traditional bow with cutting-edge performance and the modern design found in the S-Series.

### BOAT SPECS

**LENGTH**  
25' (7.62 m)

**DRAFT**  
32" (0.81 m)

**DRY WEIGHT**  
5,800 lbs (2,631 kg)

**HORSEPOWER**  
450 / 570 / 370

**MAX CAPACITY**  
18 People / 2,700 lbs (1,225 kg)

**BEAM**  
100" (2.54 m)

**FUEL CAPACITY**  
85.8 gal (324.8 l)

**MAX FACTORY BALLAST**  
3,300 lbs (1,497 kg)

\*Dry weight represents a boat with standard factory equipment installed, minus fuel.



SUPER AIR NAUTIQUE S23



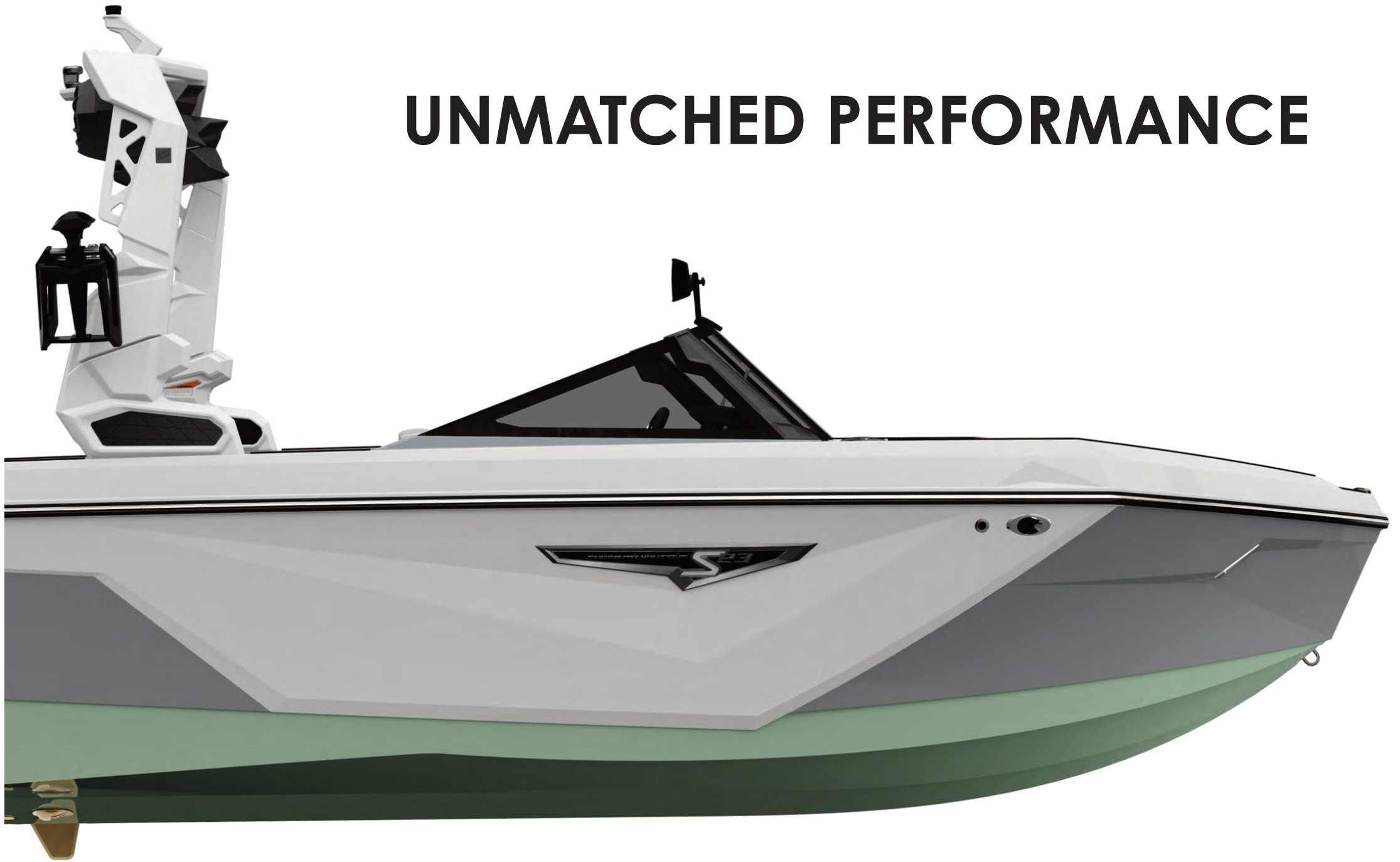








**UNMATCHED PERFORMANCE**





# S23

## SUPER AIR NAUTIQUE



Unleashing performance that remains unmatched in its class, the 2024 Super Air Nautique S23 is a cutting-edge wake boat with the modern, yet classic lines of a traditional bow Nautique. The S23 offers an array of tower and engine selections, and the performance can be customized to cater to every rider's needs and skill levels. A remarkable wake boat that serves as an exceptional platform for pushing your skills to new heights, the S23 is ready to bring you and your loved ones into a new era of style and performance.

### BOAT SPECS

**LENGTH**  
23' (7.01 m)

**DRAFT**  
31.25" (0.79 m)

**DRY WEIGHT**  
5,500 lbs (2,540 kg)

**HORSEPOWER**  
355 / 450 / 570 / 370

**MAX CAPACITY**  
16 People / 2,300 lbs (1,043 kg)

**BEAM**  
100" (2.54 m)

**FUEL CAPACITY**  
65.1 gal (246.4 l)

**MAX FACTORY BALLAST**  
3150 lbs (1,429 kg)

\*Dry weight represents a boat with standard factory equipment installed, minus fuel.



SUPER AIR NAUTIQUE S21











**ON WATER EXCELLENCE**





# S21

## SUPER AIR NAUTIQUE



The 2024 Super Air Nautique S21 exemplifies superior performance and modern styling within the 21-foot class. Showcasing the latest evolution in exterior style and design, the S21 continues the Nautique legacy of providing wakes and waves tailored to all ages and skill levels. With an interior that boasts features that make the S21 perfect for summertime adventures, the helm gives you an unparalleled driving experience. With our hallmark quality craftsmanship and unwavering reliability, the S21 stands as the ultimate embodiment of on-water excellence.

### BOAT SPECS

**LENGTH**  
21' 5" (6.52 m)

**DRAFT**  
32" (0.81 m)

**DRY WEIGHT**  
5,200 lbs (2,359 kg)

**HORSEPOWER**  
355 / 400 / 450 / 570 / 370

**MAX CAPACITY**  
14 People / 2,100 lbs (953 kg)

**BEAM**  
100" (2.54 m)

**FUEL CAPACITY**  
65.1 gal (246.4 l)

**MAX FACTORY BALLAST**  
2,650 lbs (1,202 kg)

\*Dry weight represents a boat with standard factory equipment installed, minus fuel.



SUPER AIR NAUTIQUE S21











**LIMITLESS VERSATILITY**





# GS24

## SUPER AIR NAUTIQUE



The all-new Super Air Nautique GS24 redefines versatility in a large-scale towboat. After undergoing a groundbreaking redesign, this model delivers unparalleled performance for wakesurfing, wakeboarding, and waterskiing. Boasting exceptional wakes and waves, the GS24 combines proven hull characteristics from our acclaimed Ski Nautique and G-Series to satisfy every type of watersports enthusiast. Paired with Nautique's renowned quality and dependability, the all-new Super Air Nautique GS24 is an extraordinary multi-sport performer.

### BOAT SPECS

**LENGTH**  
24' (7.32 m)

**DRAFT**  
30" (0.76 m)

**DRY WEIGHT**  
5,250 lbs (2,381 kg)

**HORSEPOWER**  
355 / 450 / 570

**MAX CAPACITY**  
17 People / 2,650 lbs (1,202 kg)

**BEAM**  
100" (2.54 m)

**FUEL CAPACITY**  
76.7 gal (290.3 l)

**MAX FACTORY BALLAST**  
3,450 lbs (1,565 kg)

\*Dry weight represents a boat with standard factory equipment installed, minus fuel.



SUPER AIR NAUTIQUE GS24











# MODERN MARVEL





# GS22

## SUPER AIR NAUTIQUE



Striking the perfect balance of multi-sport performance, the 2024 Super Air Nautique GS22 is a modern marvel of design and engineering. Incorporating hull inspiration from the world record-setting Ski Nautique and award-winning G-Series, the GS22 delivers unprecedented performance for wakesurfing, wakeboarding and waterskiing. If your family likes to do a little bit of everything on the water, the GS22 can outperform anything in its class and delivers the quality and dependability you expect from a Nautique.

### BOAT SPECS

**LENGTH**  
22' (6.70 m)

**DRAFT**  
32" (0.81 m)

**DRY WEIGHT**  
4,900 lbs (2,223 kg)

**HORSEPOWER**  
355 / 400 / 450 / 570

**MAX CAPACITY**  
15 People / 2,200 lbs (998 kg)

**BEAM**  
100" (2.54 m)

**FUEL CAPACITY**  
59 gal (223.3 l)

**MAX FACTORY BALLAST**  
2,900 lbs (1,315 kg)

\*Dry weight represents a boat with standard factory equipment installed, minus fuel.



SUPER AIR NAUTIQUE GS22











**REDEFINING VERSATILITY**





# GS20

SUPER AIR NAUTIQUE



The 2024 Super Air Nautique GS20 redefines versatility in a twenty-foot watersports boat. Offering unmatched performance for wakesurfing, wakeboarding, and waterskiing, this boat sets the benchmark for what a multi-sport boat can do. Featuring wakes and waves for all activities, the GS20's hull seamlessly integrates proven traits from our record-setting Ski Nautique and award-winning G-Series, ensuring the best experience for the whole family. Pair that with the renowned Nautique quality and reliability, and the 2024 GS20 stands as a breathtaking performer.

## BOAT SPECS

**LENGTH**  
20' (6.10 m)

**DRAFT**  
30" (0.76 m)

**DRY WEIGHT**  
4,700 lbs (2,132 kg)

**HORSEPOWER**  
355 / 400 / 450

**MAX CAPACITY**  
12 People / 1,850 lbs (839 kg)

**BEAM**  
100" (2.54 m)

**FUEL CAPACITY**  
39 gal (147.6 l)

**MAX FACTORY BALLAST**  
1,700 lbs (771 kg)

\*Dry weight represents a boat with standard factory equipment installed, minus fuel.



SUPER AIR NAUTIQUE GS20











# SKI NAUTIQUE SERIES

Ski Nautique | Ski Nautique 200

---

## WORLD RECORD-READY

For over 60 years, the Ski Nautique has been making history in the waterski world. With more personal bests and world records than any other towboat, the model that started it all for the Nautique brand is ready to continue its dominance. As the highest-level waterski boats on the market, the legendary performance of both the Ski Nautique and Ski Nautique 200 are here to be sure you ski to your highest potential.









**UNLEASH YOUR EXCELLENCE**





# SKI NAUTIQUE

## WORLD RECORD-SETTING PERFORMANCE



The Ski Nautique is the highest performing waterski boat on the planet, setting more world records and personal bests than anything else on the market. With a blended carbon-fiber and fiberglass construction process that creates the perfect balance of strength and weight, this record-setting model is your ticket to skiing to your highest potential. Including the patented MicroTuner® technology, the Ski Nautique delivers the softest wakes imaginable and delivers an unparalleled waterski experience.

### BOAT SPECS

**LENGTH**  
20' (6.10 m)

**DRAFT**  
21" (0.53 m)

**DRY WEIGHT**  
2,945 lbs (1,336 kg)

**HORSEPOWER**  
450

**MAX CAPACITY**  
7 People / 1,450 lbs (658 kg)

**BEAM**  
98" (2.49 m)

**FUEL CAPACITY**  
29 gal (109.8 l)

**MAX FACTORY BALLAST**  
400 lbs (181.4 kg)

\*Dry weight represents a boat with standard factory equipment installed, minus fuel.



SKI NAUTIQUE











**VERIFIED PERFORMER**





# SKI NAUTIQUE 200

## WORLD RECORD-BREAKING PEDIGREE



The Ski Nautique 200 is a traditional bow waterski boat that speaks to the Nautique purist in all of us. Built on the shoulders of one of the most celebrated models in waterski history, the 2024 Ski Nautique 200 is a performance-first model with the reputation to back it up. This tournament-approved towboat produces soft wakes for all ages and skill-levels of waterskiers, with an open interior layout and a playpen-style that bodes well for watersports lovers of all types.

### BOAT SPECS

**LENGTH**  
20' (6.10 m)

**DRAFT**  
22" (0.56 m)

**DRY WEIGHT**  
3,175 lbs (1,440 kg)

**HORSEPOWER**  
355 / 400 / 450

**MAX CAPACITY**  
9 People / 1,450 lbs (658 kg)

**BEAM**  
95" (2.41 m)

**FUEL CAPACITY**  
27 gal (102.1 l)

**MAX FACTORY BALLAST**  
N/A

\*Dry weight represents a boat with standard factory equipment installed, minus fuel.



SKI NAUTIQUE 200









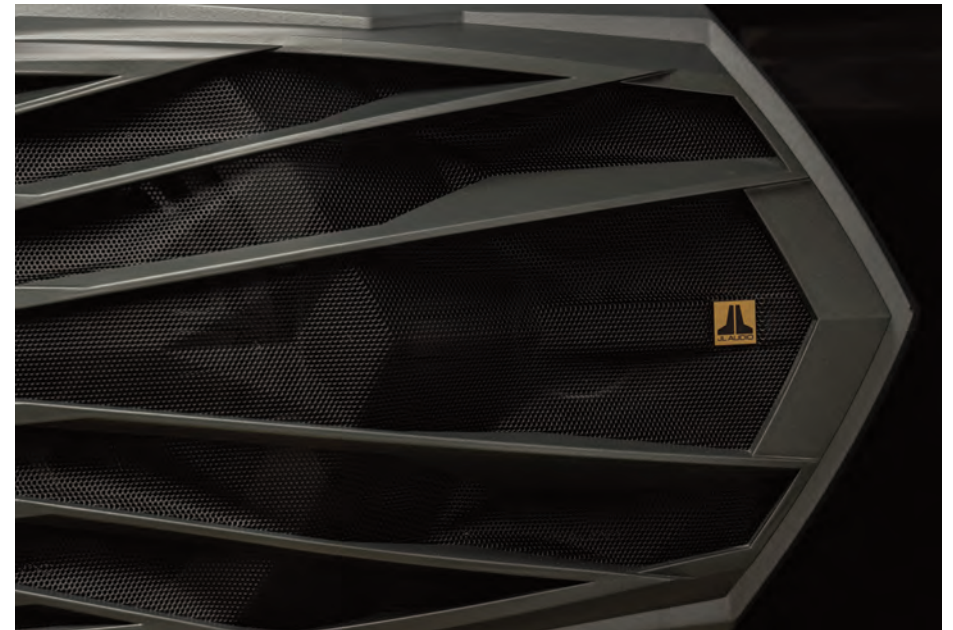


# THE ULTIMATE SOUND EXPERIENCE

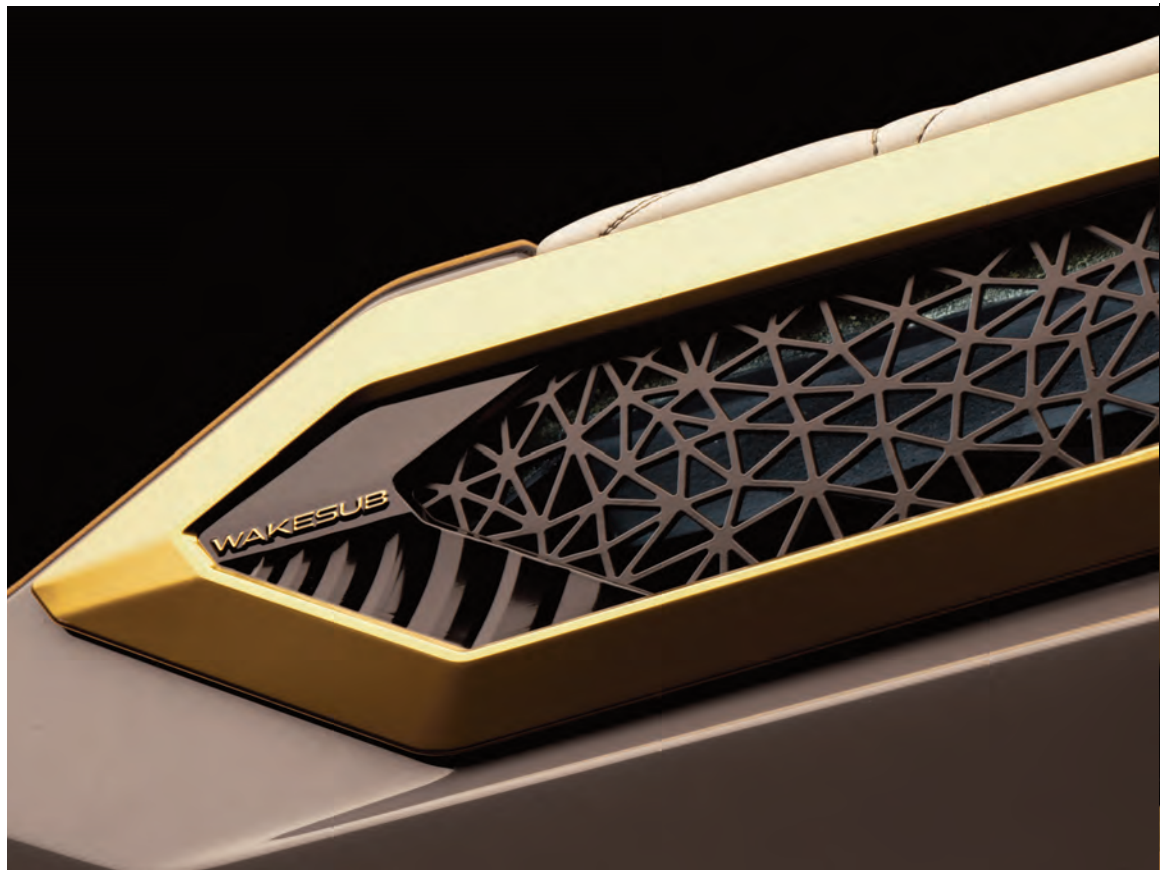
---

## JL AUDIO®

Our partnership with JL Audio allows us to provide the best possible sound experience on all of our Nautique models. Each boat is calibrated with engineers from both the Nautique and JL Audio teams to create the optimal scenario. Each component of our comprehensive JL Audio stereo system is designed to perform seamlessly with one another to deliver the highest results. The JL Audio MM105 head unit delivers crisp and clear sound to the JL Audio speakers onboard, all of which are powered by JL Audio amplifiers. With great standard packages, there are also upgraded options, depending on the boat model, that can include JL Audio subwoofers, tower speakers, additional zone control and our exclusive JL WaveFront™ and WakeSub™ technology.









# THE NEXT GENERATION OF PERFORMANCE

---

## POWER AND RELIABILITY

At Nautique, we take pride in offering our customers the most powerful and reliable engine options available on the market. With two new engines for 2024 and our industry-leading gas engine offerings from our sister company, Pleasurecraft® Marine Engines (PCM), every Nautique can provide you with outstanding performance day in and day out. If you're interested in a diesel option on select Nautique models, we're also proud to have the powerful Yanmar Marine 8LV available as well. When it comes time to choose your Nautique, you'll have peace of mind knowing you have the best possible selections available to you.







## PCM marine engines / GAS PROPULSION

**PCM ZZ8R** – Introducing the brand-new PCM® ZZ8R, a remarkable new engine offering that takes advantage of General Motors' most powerful base engine ever created for production. PCM skillfully utilizes this immense power while incorporating all the renowned features that have made PCM famous. The ZZ8R was built from the ground up with cutting-edge direct-injection and supercharged technology, providing unmatched efficiency and power compared to its counterparts. With an ability accommodate 89 Octane Fuel, the ZZ8R stands as one of the marine industry's most advanced gasoline engines.

**HP: 630 / Displacement: 376 c.i.d. (6.2L) / Torque: 665 Ft-Lb**

**PCM ZZ8S** – We are proud to offer the brand-new PCM® ZZ8S, a groundbreaking powerplant built upon General Motors' most formidable base engine ever developed for production. After a complete redesign, PCM channels raw power delivering an industry-leading 630 horsepower and 665 Ft-Lb of torque. With the utilization of cutting-edge innovation that includes direct-injection and supercharged technology, the ZZ8S also has the ability to accommodate 89 Octane fuel and is comprised of a remarkable blend of efficiency and power.

**HP: 630 / Displacement: 6.2L (376 c.i.d.) / Torque: 665 Ft-Lb**

**PCM ZZ6** – Incorporating the latest in General Motors direct-injection technology, along with the latest in PCM design, the ZZ6 has the performance and fuel efficiency that watersports enthusiasts desire.

**HP: 450 / Displacement: 376 c.i.d. (6.2L) / Torque: 465 Ft-Lb**

**PCM ZZ5** – Incorporating the latest in General Motors direct-injection technology, along with the latest in PCM design, the ZZ5 has the power and fuel efficiency for a great day on the water.

**HP: 355 / Displacement: 325 c.i.d. (5.3L) / Torque: 405 Ft-Lb**

**PCM ZR4** – The PCM ZR4 is a proven engine with over a decade of outstanding performance. Upgraded with the Gen 2 CXS exhaust system as well as 100% closed cooling, the ZR4 is stronger than ever.

**HP: 400 / Displacement: 364 c.i.d. (6.0L) / Torque: 400 Ft-Lb**

## YANMAR / DIESEL PROPULSION

**8LV** – We're proud to offer a Yanmar diesel option for our G-Series, S-Series and Paragon models. With high torque output and an incredible power-to-weight ratio, this turbo-charged diesel engine provides a more fuel-efficient option for those looking to keep their RPM's low when fully loaded.

**HP: 370 / Displacement: 272 c.i.d. (4.5L) / Torque: 595 Ft-Lb**



# DESIGNED FOR COASTAL ADVENTURES

G25P | G23P | G25 | G23 | G21 | S25 | S23 | S21 | GS24 | GS22 | GS20

---

## NAUTIQUE COASTAL EDITION

The Nautique Coastal Edition was made for saltwater days. If you spend your time on the water by the coast, then you know the value of products built to last. That's why our Nautique Coastal Editions are made with corrosion-resistant features throughout the boat that protect vital parts from the abuse of saltwater. So whether or not you spend your days in a tropical paradise or an intra-coastal waterway, the Nautique Coastal Edition ensures your boat stands the test of time.









# INTERIOR COLORS

			
MYSTIC WHITE	LUNAR WHITE	HAZE GREY	TUNGSTEN GREY
			
JET BLACK	SAHARA SAND	MOJAVE BROWN	CRIMSON RED
			
VICTORY RED	CRUSH ORANGE	CANARY YELLOW	CAPTIVA GREEN
			
EMERALD GREEN	STEEL BLUE	REEF BLUE	MASTERS BLUE
			
ADMIRAL BLUE	HAZE GREY TRUEWEAVE	MOJAVE BROWN TRUEWEAVE	JET BLACK TRUEWEAVE
			
TUNGSTEN GREY TRUEWEAVE	MYSTIC WHITE SOFTMAX	ANTHRACITE SOFTMAX	JET BLACK SOFTMAX

# EXTERIOR COLORS

			
MYSTIC WHITE	LUNAR WHITE	HAZE GREY	TUNGSTEN GREY
			
JET BLACK	VICTORY RED	CRUSH ORANGE	CANARY YELLOW
			
CAPTIVA GREEN	STEEL BLUE	REEF BLUE	MASTERS BLUE
			
ADMIRAL BLUE	ANTHRACITE METAL FLAKE	JET BLACK METAL FLAKE	MEDALLION METAL FLAKE
			
CRIMSON RED METAL FLAKE	VICTORY RED METAL FLAKE	EMERALD GREEN METAL FLAKE	STEEL BLUE METAL FLAKE
			
REEF BLUE METAL FLAKE	MASTERS BLUE METAL FLAKE	ADMIRAL BLUE METAL FLAKE	

















Nautique Boat Company, Inc.  
14700 Aerospace Parkway • Orlando, Florida 32832 USA  
800-346-2092 • 407-855-4141  
[nautique.com](http://nautique.com)

Follow us at:    